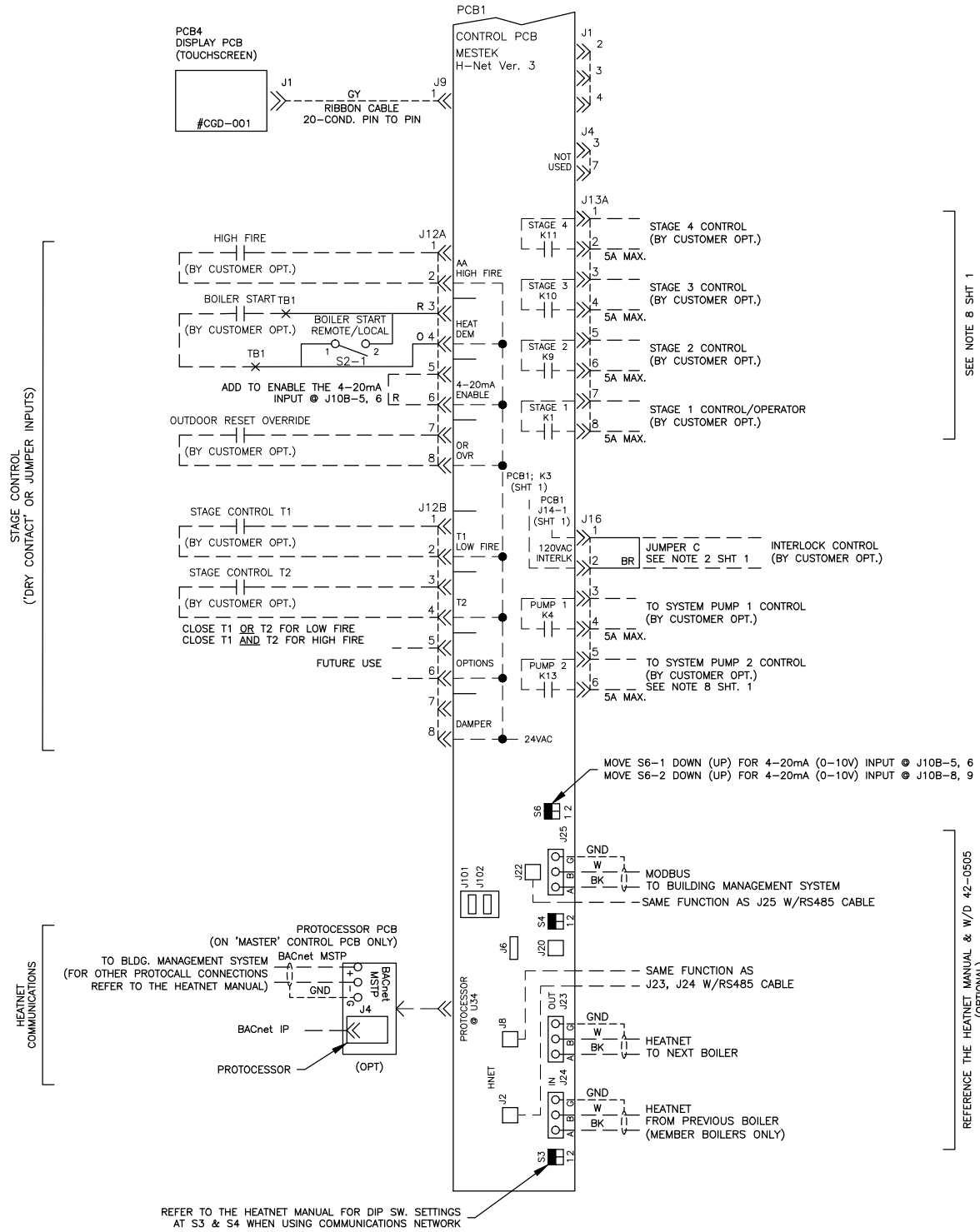
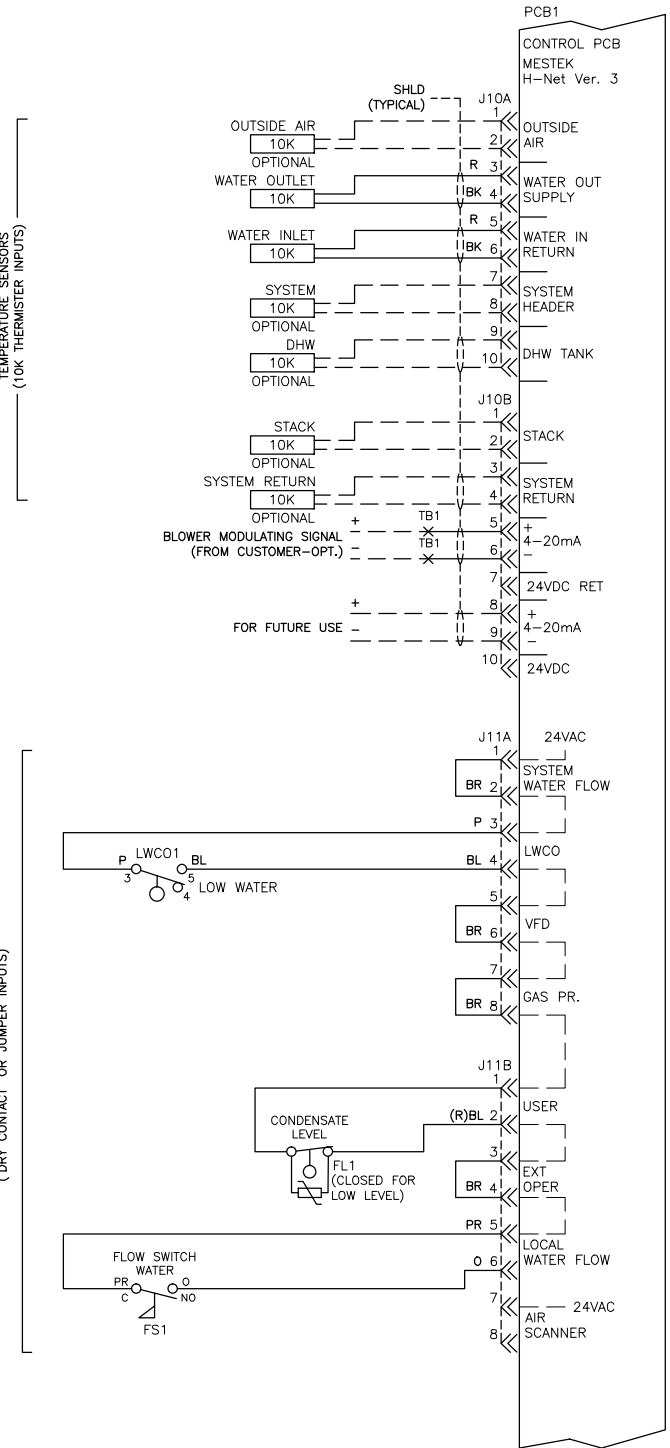


REVISIONS				
REV.	EN NO.	DATE	DRAWN BY	APPROVED
C	10901	02/22/17	MAC	JAS
D	10945	02/22/17	MAC	JAS
E	11024	05/31/17	MAC	JAS

- NOTES:
- SEE SHEET 3 FOR ADDITIONAL INFORMATION.
 - REMOVE JUMPER C WHEN USING A CUSTOMER SUPPLIED INTERLOCK.
 - POWER SERVICE CIRCUIT PROTECTION DEVICE SUPPLIED BY CUSTOMER.
 - THE 120VAC POWER CONTROL CIRCUIT MUST NOT BE USED AS A POWER SOURCE FOR FIELD CONTROL DEVICES.
 - FOR MULTIPLE BOILERS OPERATING WITH A SYSTEM AIR DAMPER WHEN IN A MASTER/MEMBER CONFIGURATION: ADD A JUMPER FROM TERMINAL TB-16 ON THE MASTER BOILER TO TERMINAL TB-16 ON ALL MEMBER BOILERS.
 -
 -
 - HEATNET "LITE" CONTROL BOARDS PROVIDED FOR SUBORDINATE CONTROL BOARDS. HEATNET ONLINE, STAGE 2, 3, 4 AND SYSTEM PUMP 2 OUTPUTS ARE NOT AVAILABLE WITH THE H-NET "LITE" CONTROL PCB.

DIVISION		PRODUCT		DRAWN BY		DATE		DRAWING DESCRIPTION			
RBI		CK1000		MAC		03/21/16		LADDER DIAGRAM			
THE PRINT AND ALL INFORMATION THEREON IS PROPERTY OF THE RBI DIVISION OF MESTEK, INC. NEITHER THE PRINT NOR THE INFORMATION THEREON MAY BE REPRODUCED OR USED IN ANY MANNER WHATSOEVER OR DIVULGED TO ANY OTHER PERSON UNLESS SPECIFICALLY AUTHORIZED BY MESTEK, INC.		CHECKED BY		DATE		DRAWING NUMBER					
		JAS		03/21/16		CK1000XR8X0XAXXM2X8					
APPROVED BY		DATE		SHEET		SHEET SIZE		SCALE		REVISION	
JAS		03/23/16		1 OF 7		B		N/A		E	

D
C
B
A



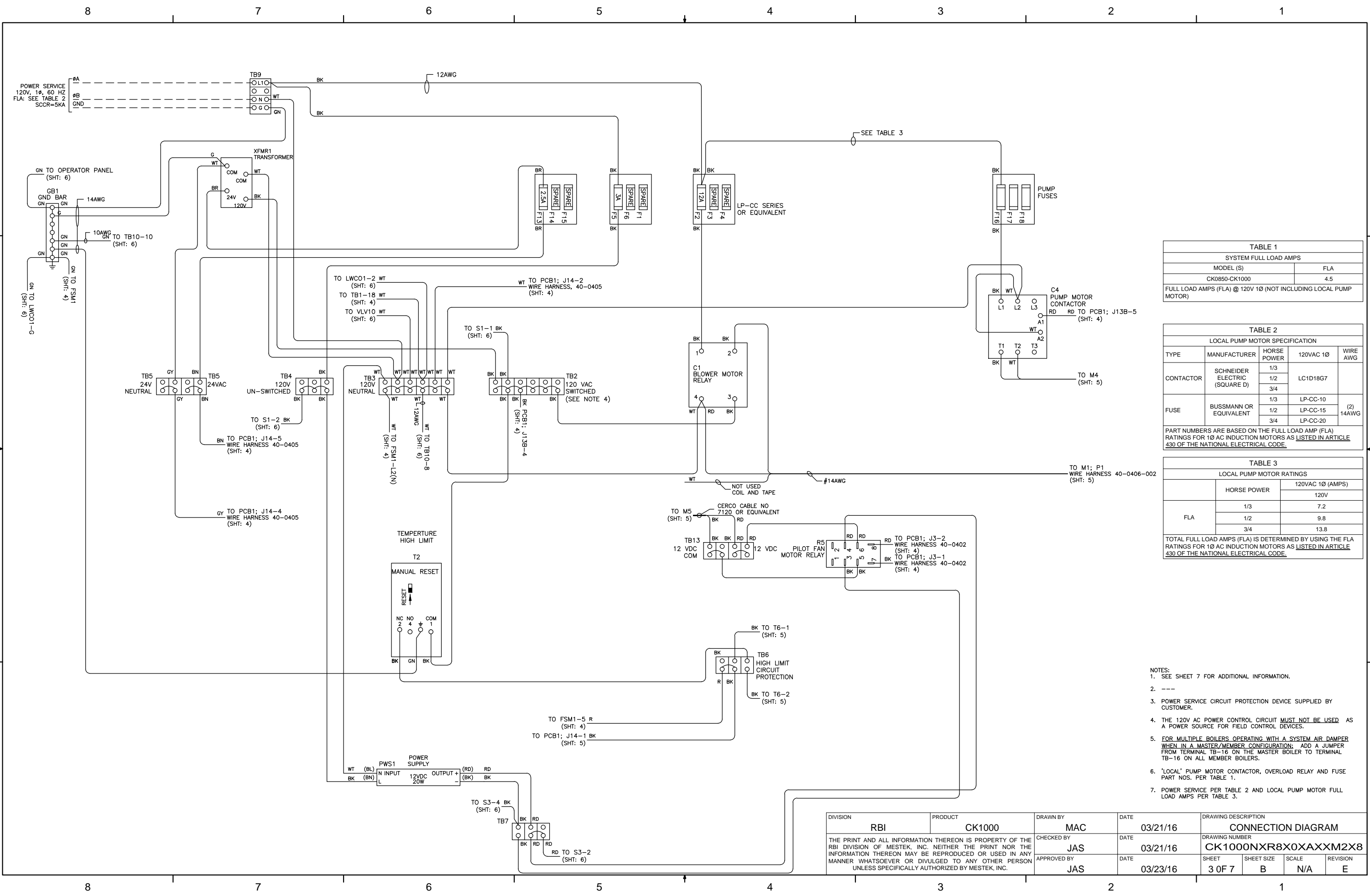
SEE NOTE 8 SHT 1

REFERENCE THE HEATNET MANUAL & W/D 42-0505 (OPTIONAL)

REFER TO THE HEATNET MANUAL FOR DIP SW. SETTINGS AT S3 & S4 WHEN USING COMMUNICATIONS NETWORK

NOTES:
1. SEE SHEET 3 FOR ADDITIONAL INFORMATION.

DIVISION	RBI	PRODUCT	CK1000	DRAWN BY	MAC	DATE	03/21/16	DRAWING DESCRIPTION						
								LADDER DIAGRAM						
THE PRINT AND ALL INFORMATION THEREON IS PROPERTY OF THE RBI DIVISION OF MESTEK, INC. NEITHER THE PRINT NOR THE INFORMATION THEREON MAY BE REPRODUCED OR USED IN ANY MANNER WHATSOEVER OR DIVULGED TO ANY OTHER PERSON UNLESS SPECIFICALLY AUTHORIZED BY MESTEK, INC.								CHECKED BY	JAS	DATE	03/21/16	DRAWING NUMBER		
								APPROVED BY	JAS	DATE	03/23/16	CK1000NXR8X0XAXXM2X8		
		SHEET	2 OF 7	SHEET SIZE	B	SCALE	N/A	REVISION						
								E						



MODEL (S)	FLA
CK0850-CK1000	4.5

FULL LOAD AMPS (FLA) @ 120V 1Ø (NOT INCLUDING LOCAL PUMP MOTOR)

TYPE	MANUFACTURER	HORSE POWER	120VAC 1Ø	WIRE AWG
CONTACTOR	SCHNEIDER ELECTRIC (SQUARE D)	1/3	LC1D18G7	
		3/4		
FUSE	BUSSMANN OR EQUIVALENT	1/3	LP-CC-10	(2) 14AWG
		1/2	LP-CC-15	
		3/4	LP-CC-20	

FLA	HORSE POWER	120VAC 1Ø (AMPS)	
		120V	
	1/3	7.2	
	1/2	9.8	
	3/4	13.8	

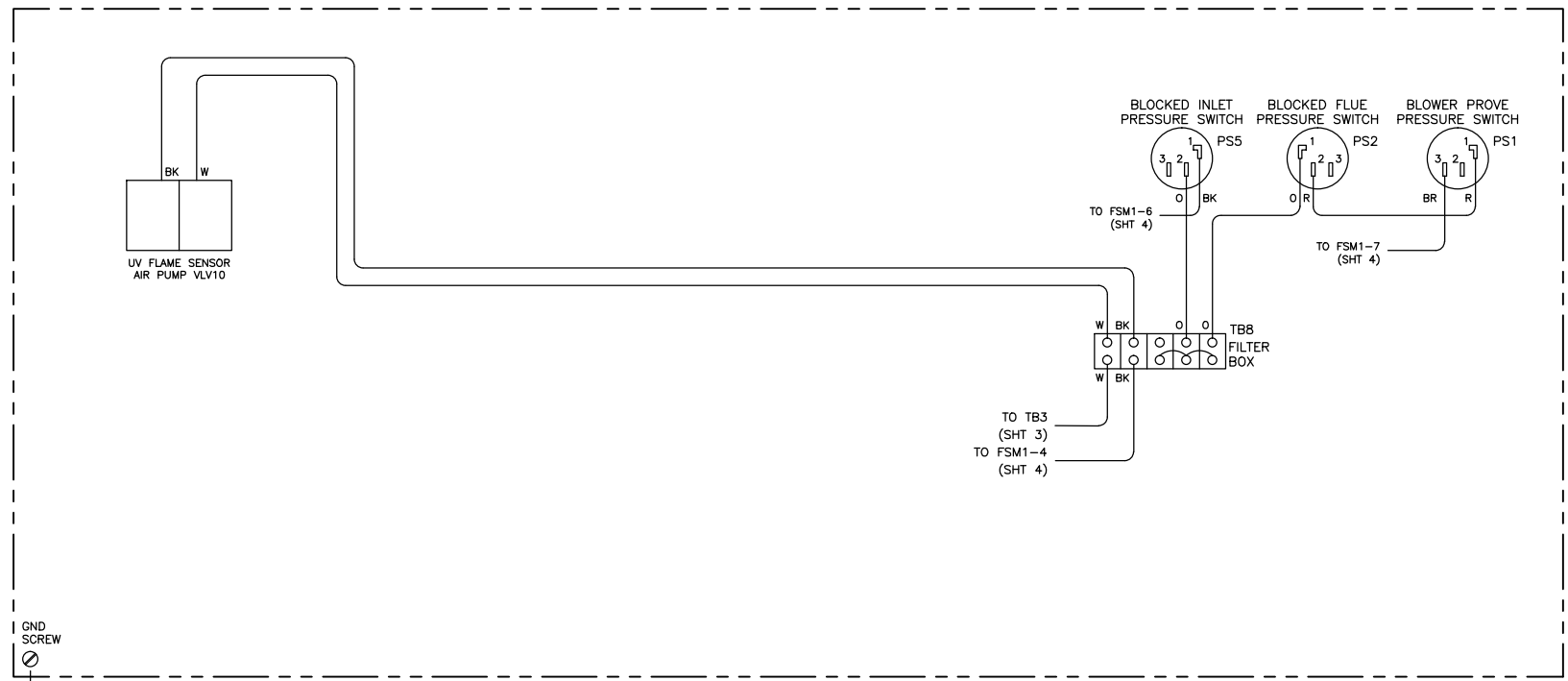
TOTAL FULL LOAD AMPS (FLA) IS DETERMINED BY USING THE FLA RATINGS FOR 1Ø AC INDUCTION MOTORS AS LISTED IN ARTICLE 430 OF THE NATIONAL ELECTRICAL CODE.

- NOTES:
- SEE SHEET 7 FOR ADDITIONAL INFORMATION.
 -
 - POWER SERVICE CIRCUIT PROTECTION DEVICE SUPPLIED BY CUSTOMER.
 - THE 120V AC POWER CONTROL CIRCUIT **MUST NOT BE USED** AS A POWER SOURCE FOR FIELD CONTROL DEVICES.
 - FOR MULTIPLE BOILERS OPERATING WITH A SYSTEM AIR DAMPER WHEN IN A MASTER/MEMBER CONFIGURATION: ADD A JUMPER FROM TERMINAL TB-16 ON THE MASTER BOILER TO TERMINAL TB-16 ON ALL MEMBER BOILERS.
 - 'LOCAL' PUMP MOTOR CONTACTOR, OVERLOAD RELAY AND FUSE PART NOS. PER TABLE 1.
 - POWER SERVICE PER TABLE 2 AND LOCAL PUMP MOTOR FULL LOAD AMPS PER TABLE 3.

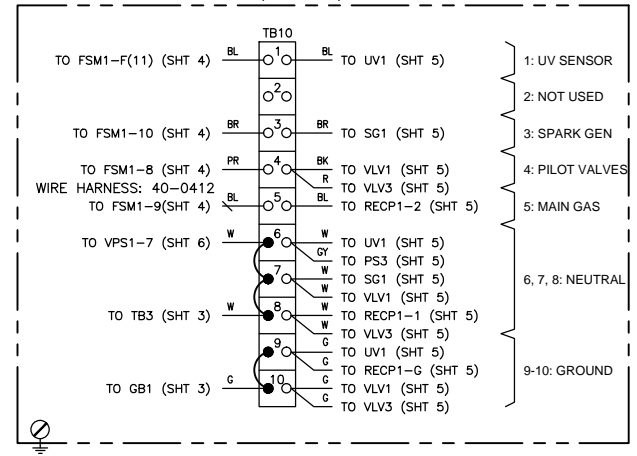
DIVISION	PRODUCT	DRAWN BY	DATE	DRAWING DESCRIPTION					
RBI	CK1000	MAC	03/21/16	CONNECTION DIAGRAM					
THE PRINT AND ALL INFORMATION THEREON IS PROPERTY OF THE RBI DIVISION OF MESTEK, INC. NEITHER THE PRINT NOR THE INFORMATION THEREON MAY BE REPRODUCED OR USED IN ANY MANNER WHATSOEVER OR DIVULGED TO ANY OTHER PERSON UNLESS SPECIFICALLY AUTHORIZED BY MESTEK, INC.				CHECKED BY	DATE	DRAWING NUMBER			
				JAS	03/21/16	CK1000NXR8X0XAXXM2X8			
				APPROVED BY	DATE	SHEET	SHEET SIZE	SCALE	REVISION
				JAS	03/23/16	3 OF 7	B	N/A	E

8 7 6 5 4 3 2 1

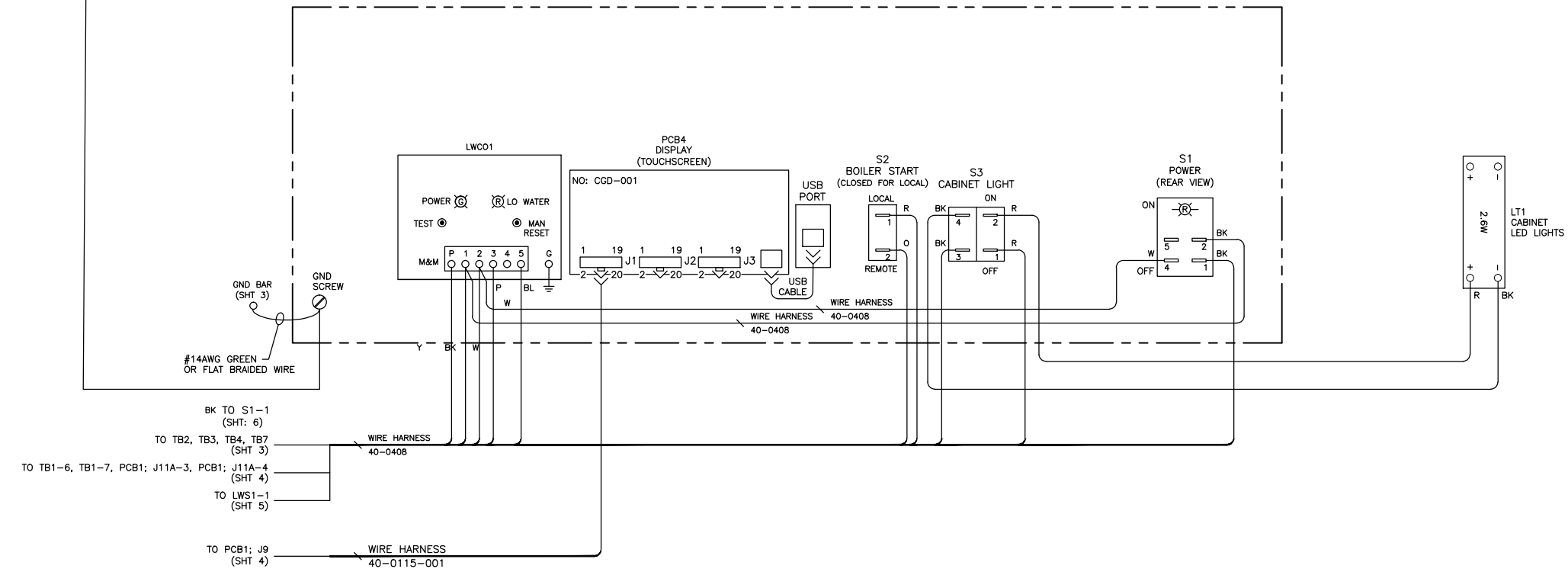
UPPER PRESSURE SWITCH PANEL
(FRONT VIEW)



REAR JUNCTION PANEL
(FRONT VIEW)



OPERATOR PANEL
(FRONT VIEW)



- NOTES:
1. SEE SHEET 7 FOR ADDITIONAL INFORMATION.
2. ---
3. ---
4. THE 120VAC POWER CONTROL CIRCUIT MUST NOT BE USED AS A POWER SOURCE FOR FIELD CONTROL DEVICES.

DIVISION	PRODUCT	DRAWN BY	DATE	DRAWING DESCRIPTION			
RBI	CK1000	MAC	03/21/16	CONNECTION DIAGRAM			
THE PRINT AND ALL INFORMATION THEREON IS PROPERTY OF THE RBI DIVISION OF MESTEK, INC. NEITHER THE PRINT NOR THE INFORMATION THEREON MAY BE REPRODUCED OR USED IN ANY MANNER WHATSOEVER OR DIVULGED TO ANY OTHER PERSON UNLESS SPECIFICALLY AUTHORIZED BY MESTEK, INC.				CHECKED BY	DATE	DRAWING NUMBER	
				JAS	03/21/16	CK1000NXR8X0XAXXM2X8	
APPROVED BY	DATE	SHEET	SHEET SIZE	SCALE	REVISION		
JAS	03/23/16	6 OF 7	B	N/A	E		

8 7 6 5 4 3 2 1

8

7

6

5

4

3

2

1

D

C

B

A

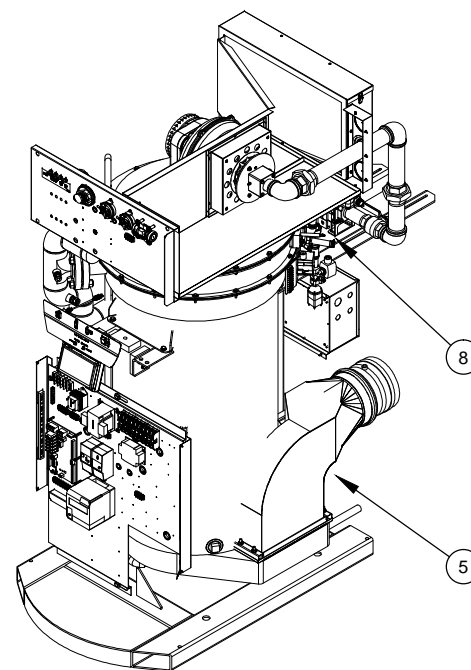
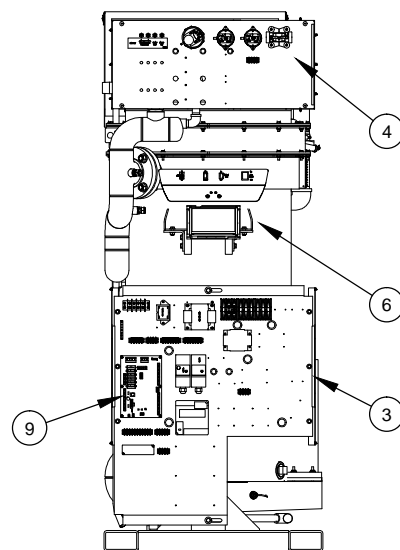
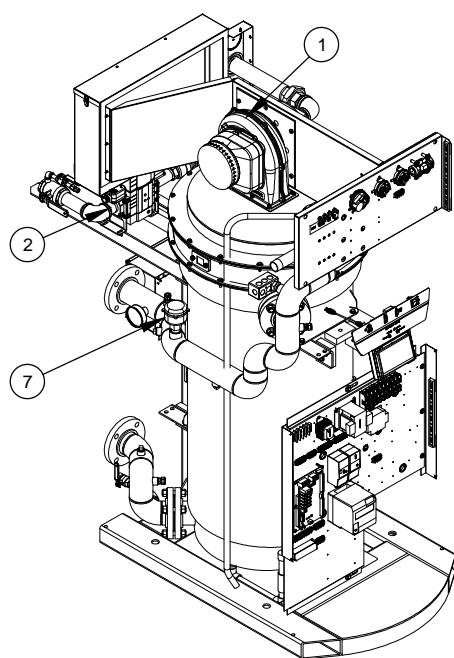
D

C

B

A

- 1 BLOWER MOTOR (M1)
- 2 MAIN GAS VALVE ASSEMBLY (VLV2)
- 3 MAIN ELECTRICAL CONTROL PANEL
- 4 UPPER PRESSURE SWITCH PANEL
- 5 TRANSFORMER (FOR 460V AND 575V UNITS ONLY)
- 6 OPERATOR PANEL
- 7 FLOW SWITCH (FS1)
- 8 SPARK GENERATOR (SG1) AND IGNITOR ASSEMBLY
- 9 H-NET CONTROL BOARD



NOTES:

1. WIRE COLOR CODE SHALL BE AS FOLLOWS:
 BK-BLACK R-RED BL-BLUE G-GREEN G/Y-GREEN/YELLOW
 W-WHITE P-PINK BR-BROWN GY-GRAY
 PR-PURPLE Y-YELLOW O-ORANGE TN-TAN
- WIRE CODE: ———— FACTORY WIRING
 — — — — FIELD WIRING
 - - - - - OPTIONAL WIRING
2. ALL WIRES SHALL BE #18AWG UNLESS SPECIFIED. WIRE TYPE SHALL BE TEW, 600V, STRANDED 16x30, WITH INSULATION RATED FOR 105° OR EQUIVALENT.
3. USE CABLE TIES, CABLE FASTENERS, SPADE TERMINALS, MALE CONNECTORS, WIRENUTS, ETC. AS REQUIRED.
4. LINE VOLTAGE WIRE AND LOW VOLTAGE WIRE SHALL BE KEPT SEPARATE AS MUCH AS POSSIBLE
5. LINE VOLTAGE SHALL NEVER RUN PARALLEL TO LOW VOLTAGE OR THROUGH THE SAME KNOCKOUT. IF LOW VOLTAGE AND LINE VOLTAGE MUST PASS EACH OTHER THEY SHALL PASS PERPENDICULAR TO EACH OTHER.
6. DO NOT RUN ANY SIGNAL CABLE NEAR SPARK GENERATOR.

ABBREVIATION:

- C# - CONTACTOR 1,2,3 (C1, C2, ...)
- DHW - DOMESTIC HOT WATER
- F# - FUSE 1,2,3 (F1, F2, ...)
- FL# - FLOAT SWITCH 1,2,3 (FL1, FL2, ...)
- FLA - FULL LOAD AMPS
- FS# - FLOW SWITCH 1,2,3 (FS1, FS2, ...)
- FSM# - FLAME SENSE RELAY MODULE 1,2,3 (FSM1, FSM2, ...)
- GB# - GROUND BAR 1,2,3 (GB1, GB2, ...)
- IGN# - IGNITOR 1,2,3 (IGN1, IGN2, ...)
- LT# - LIGHT 1,2,3 (LT1, LT2, ...)
- LWCO - LOW WATER CUTOFF
- OPT - OPTION
- OL - OVERLOAD
- M# - MOTOR 1,2,3 (M1, M2, ...)
- PS# - PRESSURE SWITCH 1,2,3 (PS1, PS2, ...)
- PWS# - POWER SUPPLY
- S# - SWITCH 1,2,3 (S1, S2, ...)
- SCCR - SHORT CIRCUIT CURRENT RATING
- SG# - SPARK GENERATOR 1,2,3 (SG1, SG2, ...)
- SHLD - SHIELDED CABLE
- SS RELAY - SOLID STATE RELAY
- TB# - TERMINAL BLOCK 1,2,3 (TB1, TB2, ...)
- TAS# - TEMPERATURE-ACTUATED SWITCH (TAS1, TAS2, ...)
- VLV# - VALVE 1,2,3 (VLV1, VLV2, ...)
- XFMR# - TRANSFORMER 1,2,3 (XFMR1, XFMR2, ...)

DIVISION	PRODUCT	DRAWN BY	DATE	DRAWING DESCRIPTION	
RBI	CK1000	MAC	03/21/16	INFORMATION AND LAYOUT DIAGRAM	
THE PRINT AND ALL INFORMATION THEREON IS PROPERTY OF THE RBI DIVISION OF MESTEK, INC. NEITHER THE PRINT NOR THE INFORMATION THEREON MAY BE REPRODUCED OR USED IN ANY MANNER WHATSOEVER OR DIVULGED TO ANY OTHER PERSON UNLESS SPECIFICALLY AUTHORIZED BY MESTEK, INC.		CHECKED BY	DATE	DRAWING NUMBER	
		JAS	03/21/16	CK1000NXR8X0XAXXM2X8	
		APPROVED BY	DATE	SHEET	SHEET SIZE
		JAS	03/23/16	7 OF 7	B
				SCALE	REVISION
				N/A	E

8

7

6

5

4

3

2

1